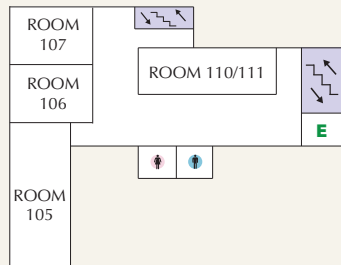


# MAIN CHURCH BUILDING



## MEZZANINE 1



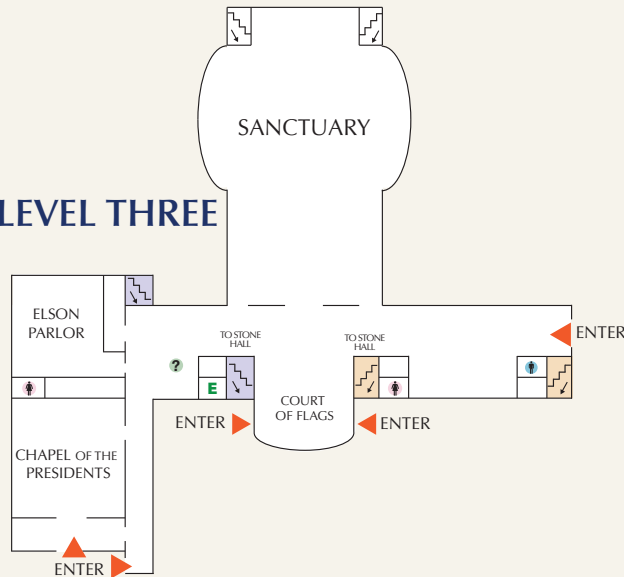
## MEZZANINE 2



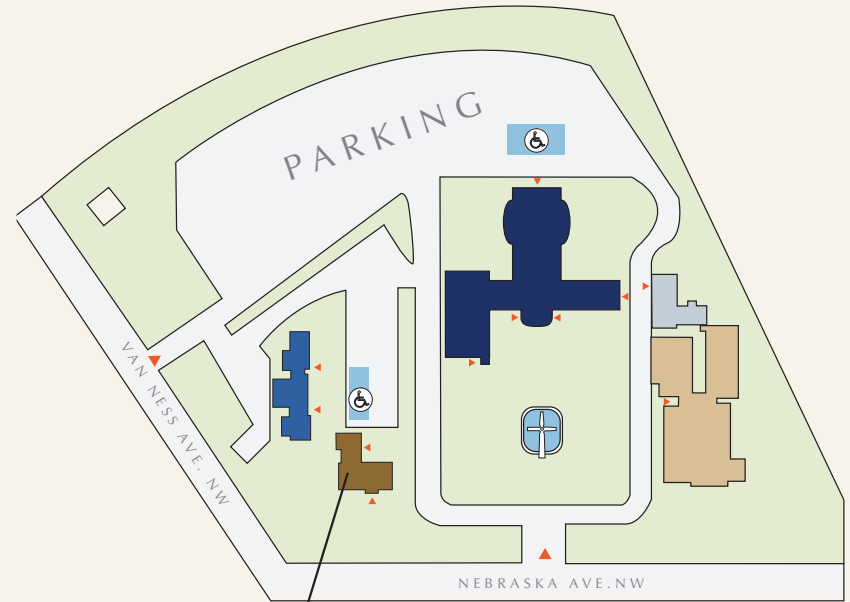
## KEY

- ▲ ENTRANCE
- ♂ MEN'S RESTROOM
- ♀ WOMEN'S RESTROOM
- ℹ WELCOME CENTER/ INFORMATION
- ♿ HANDICAPPED ACCESSIBLE
- E ELEVATOR
- ↕ STAIRS THROUGH MEZZANINE 1
- ↕ STAIRS THROUGH MEZZANINE 2

## LEVEL THREE



# FULL CAMPUS



## KEY

- ▲ ENTRANCE
- ♿ HANDICAPPED PARKING
- MAIN CHURCH BUILDING
- SANCTUARY
- CHAPEL OF THE PRESIDENTS
- STONE HALL
- AGENCIES BUILDING
- MULTIPURPOSE BUILDING
- YOUTH HOUSE
- NATIONAL PRESBYTERIAN SCHOOL
- JONES HALL / SCHOOL GYM
- ADMINISTRATION BUILDING
- YELLOW HOUSE

# AGENCIES BUILDING

